

Isanti County Child Care Core Team:



Lowell Becker*
Jeni Darling*
Kim Goodmanson*
Tara Hallberg

Vanessa Hanzel
Don Hickman
Steph Hillesheim
Rachel Kytonen



Del Larson
Bill Lindberg
Penny Messer*
Christine Miller*

Loren Nelson
Gwen O'Brien
Michelle Thomas
Evan Vogel
Mary Westlund



*Leadership Team

Contacts:

Kim Goodmanson
Phone ?
Penny Messer
763-689-8152



Sponsors:

First Children's Finance
Initiative Foundation
Memorial Hospital Foundation



Isanti County Child Care

Leadership Team

Oakview Office Complex
1700 E Rum River Drive S, Suite A
Cambridge, MN 55008



"Investing in early care and education is the right thing to do for our youngest children and their families"



**Isanti County Child Care
Leadership Team**

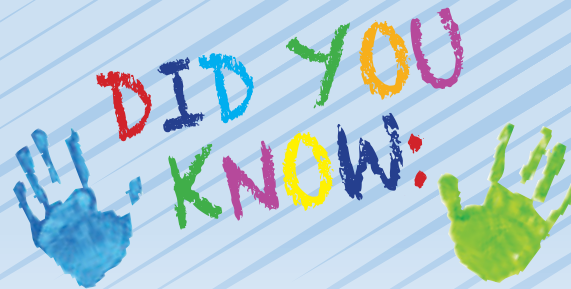
Isanti County Child Care Need Analysis:



Isanti County Population is
40,004

Cities in Isanti County:

- Braham
- Cambridge
- Dalbo
- Grandy
- Isanti
- Stanchfield



1,031

Spots needed for birth to 5 years;

670

Current child care capacity;

26

Licensed family child care;

9

Licensed child care centers;

67%

Children under 5 with
all parents in the workforce;

1,601

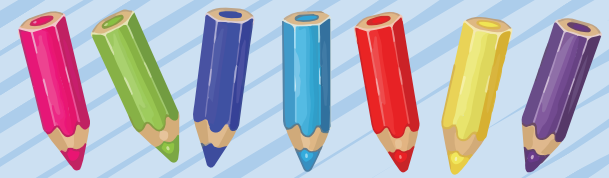
Children under 5 with
all parents working;

\$650

per month/preschool -
Cost of family child care;

\$858

per month/preschool -
Cost of center child care.



We Have A Plan for Child Care in Isanti County

Goal 1: Within the next 3-6 months, we will begin to provide local training for current and potential child care providers.

Goal 2: Within the next 6 months, we will develop a marketing plan to recruit additional child care professionals in Isanti County.

Goal 3: Within the next year, we will explore and identify potential facilities for a POD or Center. Within the next 2 years, we will identify potential financial streams and partners to facilitate opening.



Isanti County Child Care
Leadership Team