



**EAST CENTRAL**  
Regional Development Commission

East Central Regional Development  
Commission Orientation  
August 26, 2024

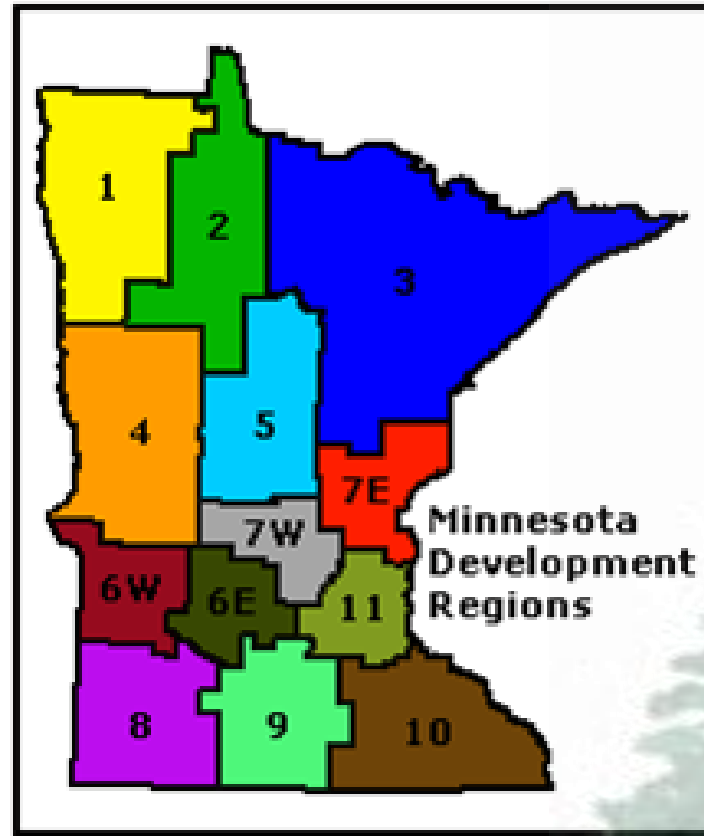


**EAST CENTRAL**  
Regional Development Commission

Progress through leadership and advocacy

## Historical Overview

- Regional Development Act of 1969
- Thirteen Development Regions in Minnesota
- ECRDC was formed by petition of local governments in 1973





**EAST CENTRAL**  
Regional Development Commission

Progress through leadership and advocacy

# Regional Development Act

MN Stat §462.381 to 462.398

- Growth and development issues transcend jurisdictional boundaries.
- Coordination of multi-jurisdictional activities needed for effective policies and programs.
- Intergovernmental cooperation effective for pooling resources for common problems.

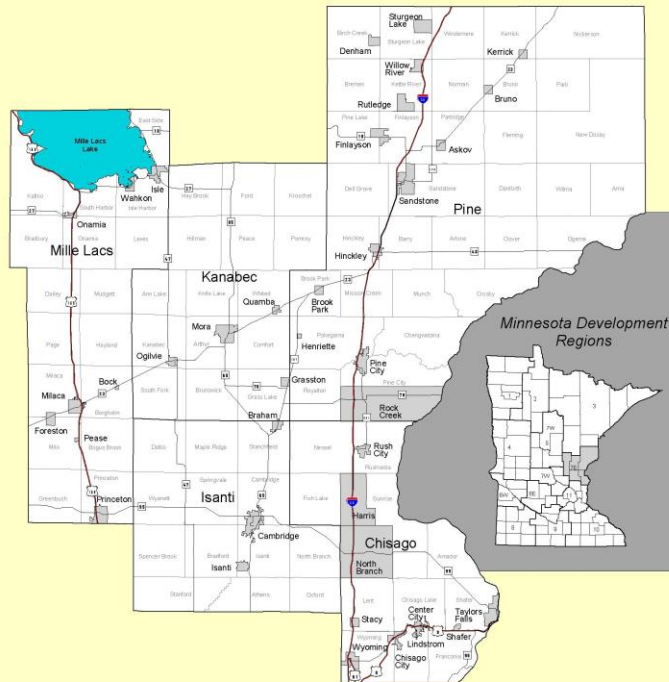




**EAST CENTRAL**  
Regional Development Commission

Progress through leadership and advocacy

*Region 7E*  
East Central Regional  
Development Commission



# East Central Regional Development Commission (7E)

Serving the counties of Region 7E:  
Chisago, Isanti, Kanabec, Mille  
Lacs and Pine



**EAST CENTRAL**  
Regional Development Commission

Progress through leadership and advocacy

## Region 7E Facts

- 3,529 square miles
- 39 statutory cities, 88 townships, and 20 ISDs
- Population: 177,739
- Annual operating budget: \$950,000+
- 5 State Senate seats, 8 State House seats





**EAST CENTRAL**  
Regional Development Commission

Progress through leadership and advocacy

## ECRDC Mission

“To provide leadership and direction through creative problem solving. We do this by initiating projects and programs that lead to creative solutions to regional problems, by providing technical assistance and by identifying and developing available resources. Our mission is to provide a leadership role as and advocate for East Central Minnesota to bring about positive change.”





**EAST CENTRAL**  
Regional Development Commission

Progress through leadership and advocacy

# East Central Regional Development Commission Programs & Services

- Economic Development
- Community Development
- Transportation Planning
- East Central Regional Transportation Coordinating Council
- Revolving Loan Funds
- North Central Regional Food Business Center
- Toward Zero Deaths
- Climate and Energy Grant



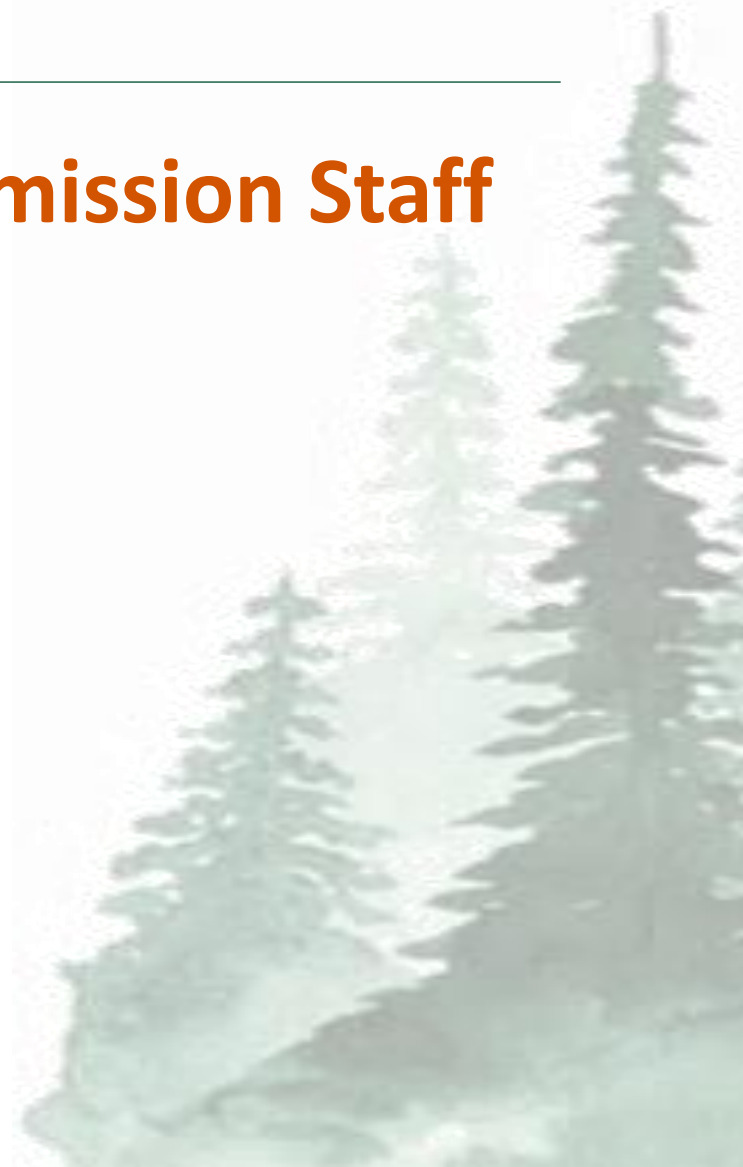


**EAST CENTRAL**  
Regional Development Commission

Progress through leadership and advocacy

# East Central Regional Development Commission Staff

<b>ECRDC Staff</b>	<b>Email</b>
<b>Robert Voss</b> Executive Director	Robert.voss@ecrdc.org
<b>Nicole Klosner</b> Climate & Energy Grant Specialist and Economic Dev	Nicole.klosner@ecrdc.org
<b>Karen Onan</b> Regional Transportation Coordinating Council	Karen.onan@ecrdc.org
<b>Trish Rydlund</b> Office Administrator	Trish.rydlund@ecrdc.org
<b>Darcy Rylander</b> Finance Director and USDA <u>MnKota</u>	Finance.director@ecrdc.org
<b>Penny Simonsen</b> Transportation and Toward Zero Deaths	Penny.simonsen@ecrdc.org
<b>Michelle Thomas</b> Economic Development, RTCC, Childcare and TZD	Michelle.thomas@ecrdc.org
<b>Jordan Zeller</b> Economic Development	Jordan.zeller@ecrdc.org







**EAST CENTRAL**  
Regional Development Commission

Progress through leadership and advocacy

## East Central Regional Development Commission is Governed by a Commissioned Board of Directors

- 5 - county board representatives
- 5 - township representatives
- 5 - municipal representatives
- 5 - public interest representatives
- 2 - school board representatives
- 1 - tribal representative
- 1 - 10,000+ population

**TOTAL: 24**





**EAST CENTRAL**  
Regional Development Commission

Progress through leadership and advocacy

## Commission Board Membership

### **Chisago County**

Bruce Fitzwater  
Ben Montzka  
Dave Waldoch  
Vacant, Public Interest

### **Isanti County**

Tom Anderson  
Alan Duff  
Nate George  
Vacant, Public Interest

### **Kanabec County**

Dave Patenaude  
Peter Ripka  
Sara Treiber  
Vacant, Municipalities

### **Mille Lacs County**

Genny Reynolds  
Dave Dillan  
Robert Hoefert  
Jack Edmonds

### **10,000+ Population**

Kevin Schieber

### **Pine County**

Jeannette Kester  
Brent Switzer  
Glen Williamson  
JJ Waldhalm

### **Tribal Rep.**

Vacant

### **School Districts**

Shelly Johnson  
Scott Moe



**EAST CENTRAL**  
Regional Development Commission

Progress through leadership and advocacy

## ECRDC Advisory Committee

- East Central Regional Transportation Coordinating Council
- Revolving Loan Fund (RLF) Committee
- Comprehensive Economic Development Strategy (CEDS)
- Transportation Advisory Committee
- Personnel & Budget Committee





**EAST CENTRAL**  
Regional Development Commission

Progress through leadership and advocacy

## Commission Responsibilities

- Set Policy (i.e. Personnel Administration & Purchasing) and provide oversight function
- Approve Work Program & Budget
- Approve Agency Expenditures
- Approve Grants, Loans, and Contract
- Participate in Advisory Committees
- Annual Audit



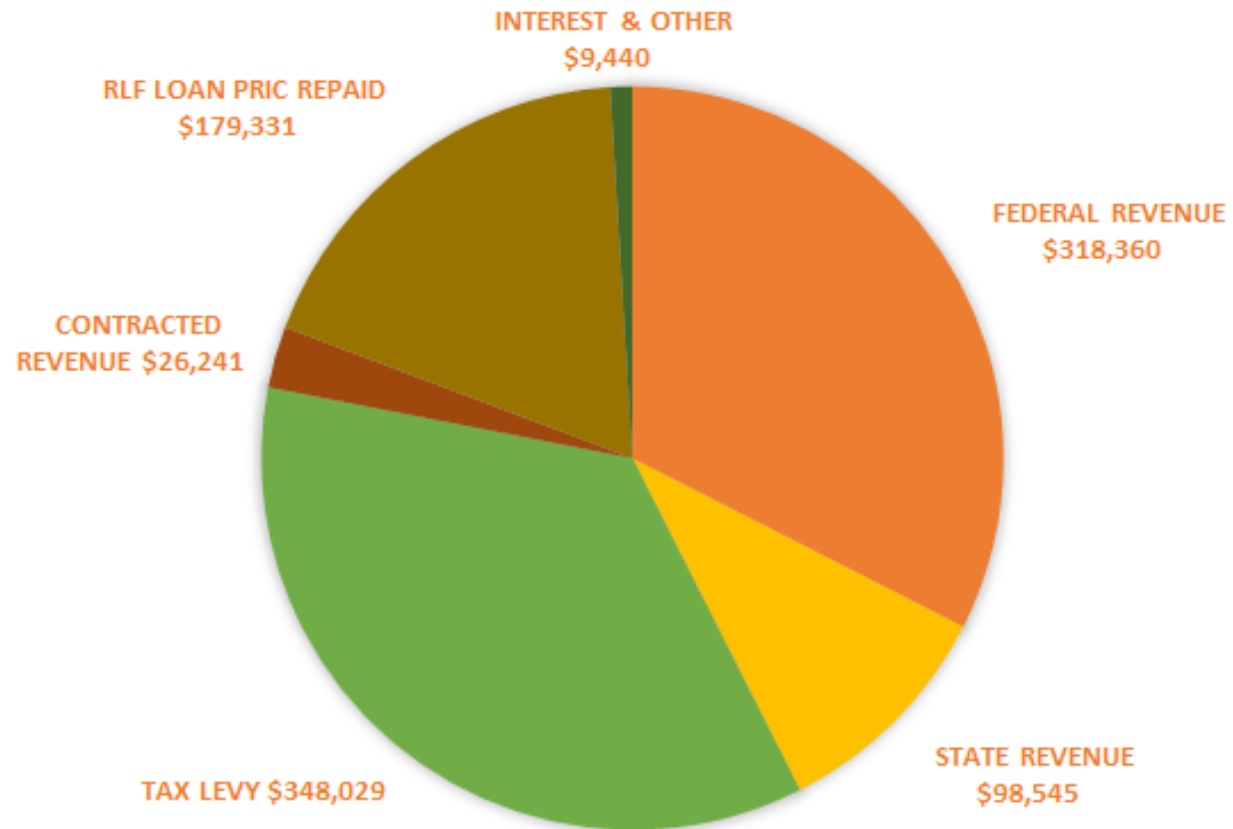




**EAST CENTRAL**  
Regional Development Commission

Progress through leadership and advocacy

## Agency Budget - Revenues

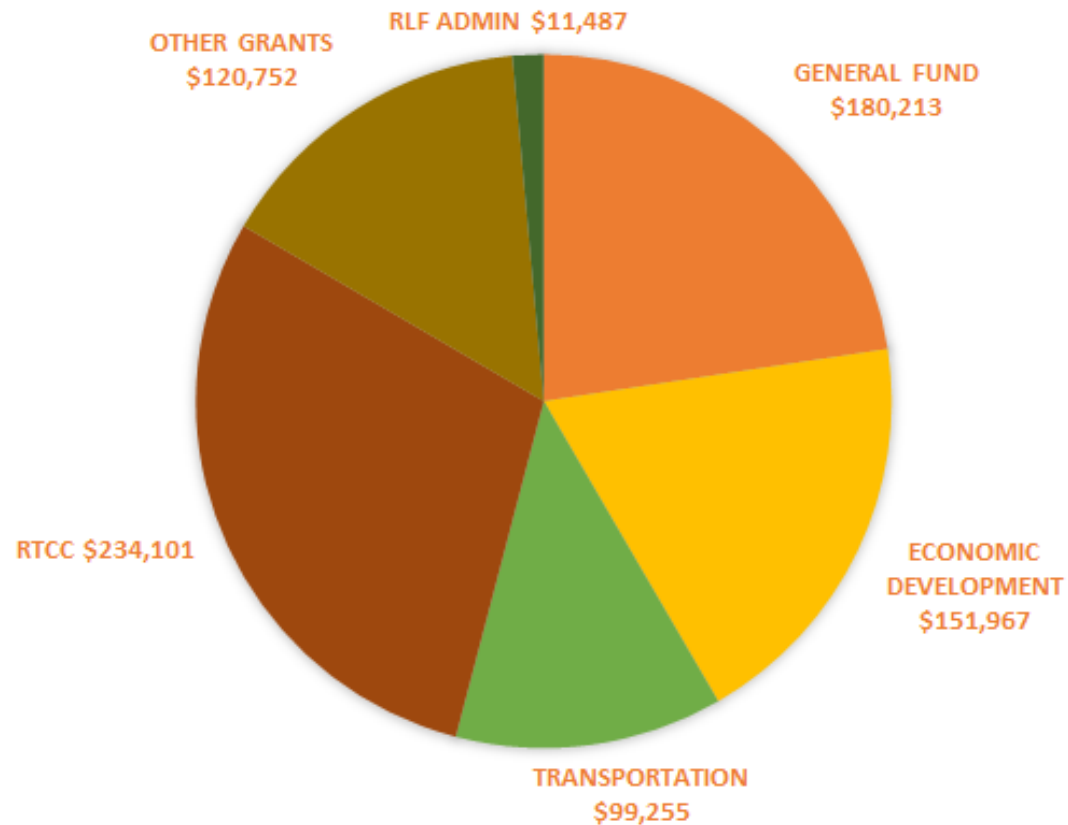




**EAST CENTRAL**  
Regional Development Commission

Progress through leadership and advocacy

# Agency Budget – Expenditures by Program





**EAST CENTRAL**  
Regional Development Commission

Progress through leadership and advocacy

## Indirect Expenses

Management and administrative costs are pooled and charged off to each program based on a percentage of salary and fringe benefits (approximately \$238,015 for FY24.)

- Annual Agency Audit
- Building Utilities/Maintenance Costs
- Software/Tech Services
- Postage, Office Supplies, Printing, Telephone, Insurance
- Compensation for Executive Director, Finance Director, Office Adm.



**EAST CENTRAL**  
Regional Development Commission

Progress through leadership and advocacy

## Commission Expenses

Commission members are eligible for per diem pay and mileage reimbursement for:

- Attendance at any regular or special meetings of the Commission; and
- if they are **appointed** by the Commission to serve as a liaison to any of the advisory committees



## Economic Development

Have been a “Economic Development District” (EDD) as designated since 1973 by the US Economic Development Administration (EDA), part of the US Department of Commerce.

As part of that we are eligible for an annual \$70,000 “Partnership Planning Grant” with a 50% match.

Pine Innovation Center, Pine City



Glenn Metalcraft, Princeton



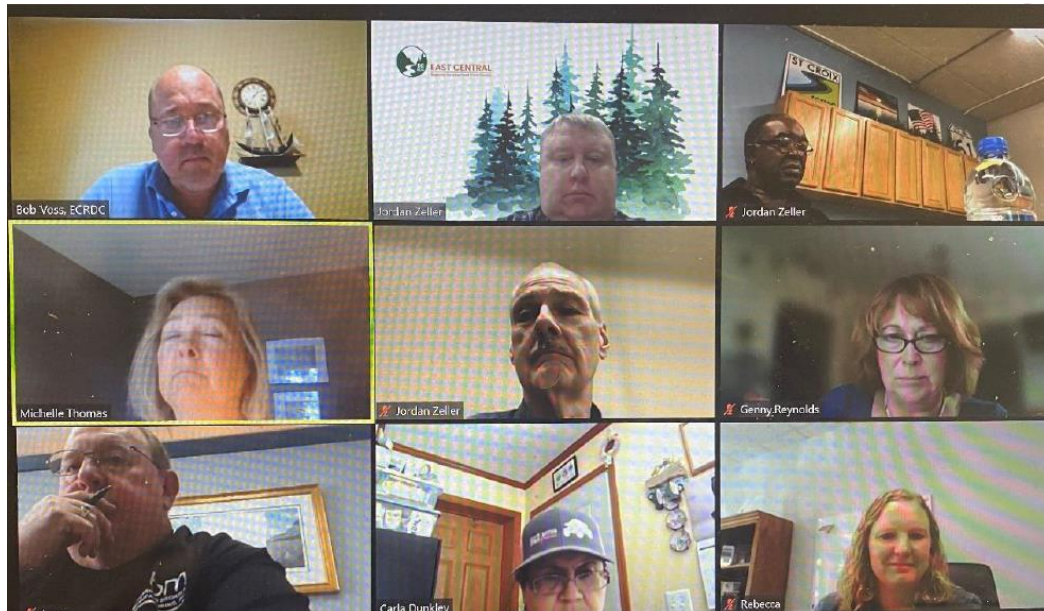
Shore Acres, Onamia



# Economic Development

## *Comprehensive Economic Development Strategy*

As part being an EDD we are required to create a “Comprehensive Economic Development Strategy”, or CEDS.



The CEDS Strategy Committee is composed of private industry, post secondary education, workforce, tribal, and chamber of commerce and that meets quarterly to oversee the program and provide guidance, etc.

Top Row, L to R: Robert L. Voss – ECRDC Executive Director, Jordan Zeller – Staff, Glen Williamson – Pine County. Second Row, L to R: Michelle Thomas – ECRDC Economic Resiliency Coordinator. John Schlagel – Isanti County, Genny Reynolds – Mille Lacs County. Bottom Row, L to R: Loren Davis (Vice Chair) – Kanabec County, Carla Dunkley (Chair) – Mille Lacs County / Mille Lacs Band of Ojibwe, Rebecca Perrotti – Kanabec County. Not pictured: Susie Brooks – Chisago County, Joe Mulford – Pine County.



## Economic Development

Being a EDA EDD, our local units of government are eligible for EDA Grants for economic development focused projects.

In just EDA grants, we have an approximately 14:1 ROI operating the EDD since 2000.

Projects funded recently include:

- Sandstone rail study
- MLBO Incubators
- Pine Tech Incubator
- Pine Tech campus modernization
- Industrial / Business Parks in: Isle, Sandstone, Mora, Cambridge.



Dignitaries meeting with Assistant US Secretary of Commerce for Economic Development Alejandra Castillo during the visit / tour of Pine Technical & Community College on April 12, 2022. L to R: , Robert L. (Bob) Voss - ECRDC Executive Director, Matt Varilek - President of the Initiative Foundation, Dr. Devindar Malhotra - MinnState Chancellor, Joe Mulford – President of Pine Technical & Community College, Alejandra Castillo – US Assistant Secretary of Commerce for Economic Development, David Minke – Pine County Administrator & Mark Majors – MN DEED Deputy Commissioner for Workforce Development.

# Economic Development

## *Revolving Loan Fund*

- Available for business financing
- Often “gap”, often subordinated
- All loans are underwritten
- All loans are secured & require personal guarantees
- Maximum loan: \$60,000. Average: \$35,000
- We charge a 1% commitment fee plus closing costs
- Approximately \$1.2mm in assets
- Prohibited from financing, housing, commercial agriculture, and personal loans, etc.
- Interest rates: we have a floor and ceiling, but often match the bank rates
- We have an 11 member loan board that makes the decisions - 2 members from each county plus 1 ECRDC board member
- Financing is often done in conjunction with others: cities, counties, DEED, Initiative Foundation, Entrepreneur Fund, etc.
- For separate loan funds: three funded by EDA, one funded by USDA. We market them together and use the same board and loan requirements, etc.



*RLF Loan Closing – IVI Holdings*





**EAST CENTRAL**  
Regional Development Commission

Progress through leadership and advocacy

## North Central-Regional Food Business Center

- Regional Food Business Center (RFBC) offers direct technical assistance to small and mid-sized food and farm businesses, including grant writing services.
- This assistance helps businesses improve their operations, access new markets, and overcome challenges in the food supply chain.
- The Center also provides support for food value and supply chain coordination, fostering collaboration and efficiency among different businesses in the food system.





**EAST CENTRAL**  
Regional Development Commission

Progress through leadership and advocacy

# Community Development

## *Climate and Energy*

In 2023 the Minnesota Department of Commerce set aside funds for the creation and funding of a State Competitiveness Fund (SCF) Match Program. This program has been assisting eligible Minnesota entities seeking federal grant awards for energy projects under the federal Inflation Reduction Act (IRA) and the Infrastructure Investment and Jobs Act (IIJA).

**Fresh**  **Energy**

# Community Development

## *Climate and Energy*

The ECRDC was awarded these funds to hire their first Regional Development & Grant Specialist in the Climate and Energy division. Nicole started in March 2024 and has been providing grant research, writing and administrative services to those eligible for clean energy funding. These programs are partly possible due to the Inflation Reduction Act (IRA) and the Infrastructure Investment and Jobs Acts (IIJA.)





**EAST CENTRAL**  
Regional Development Commission

Progress through leadership and advocacy

# Regional Transit - East Central Regional Transportation Coordinating Council (ECRTCC)



**east  
central**  
Regional Transportation  
Coordinating Council

Get Connected: [EastCentralTransit.com](http://EastCentralTransit.com)





**EAST CENTRAL**  
Regional Development Commission

Progress through leadership and advocacy

# Regional Transit - East Central Regional Transportation Coordinating Council (ECRTCC)

## ***Work is funded by a grant from MnDOT:***

to ensure all Minnesotans have access to coordinated transportation services to meet their mobility needs. We do this by working with local stakeholders, community and partners so together we can remove obstacles that prevent the successful coordination of transportation programs and resources among their respective customers.

## ***Work focuses on:***

Transportation Guidance and Consultation, Vehicle Sharing, Stakeholder and Community Engagement, Volunteer Drivers, Training and Education, and Mobility Management.

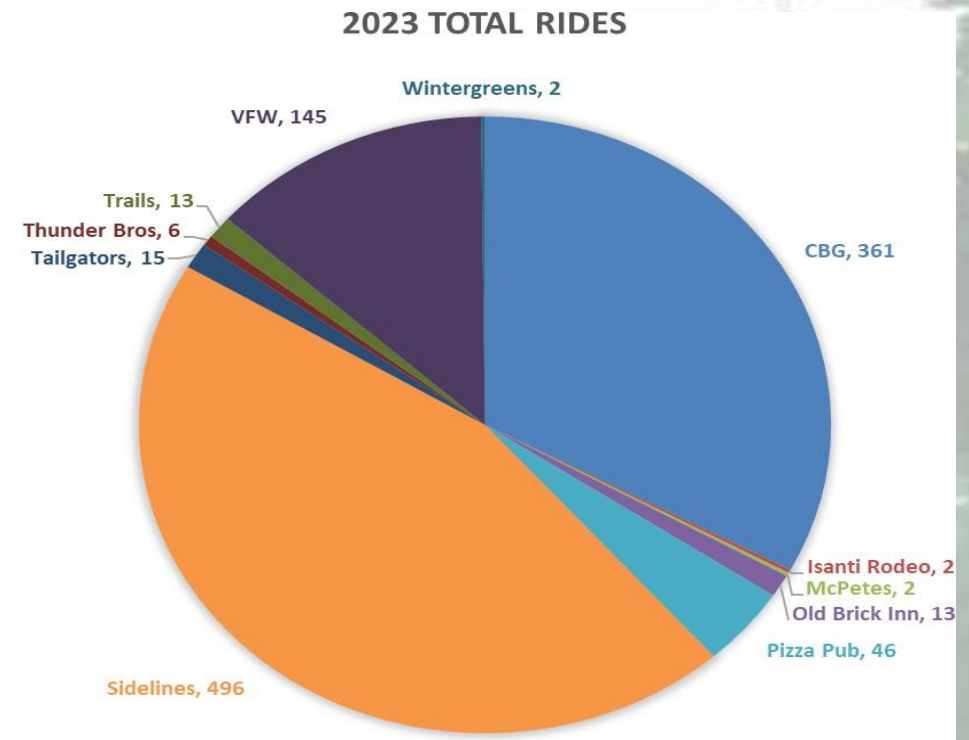
## ECRTCC Program - *SafeCab*

Designed as an ‘after hours’ transportation program working to reduce the number of impaired drivers on our roads and provide a safer way home for drinking drivers. From needless death & injury to overloaded criminal justice systems, alcohol-related crashes and DWI arrests take an emotional and economic toll on our communities.

Program success is due to commitment from local cab companies, partnership with local bars/restaurants, collaboration with law enforcement, and donations from private/community organizations.

**Totals for 2023**

<u>Rides</u>	<u>Patrons</u>
<b>1,101</b>	<b>1,582</b>

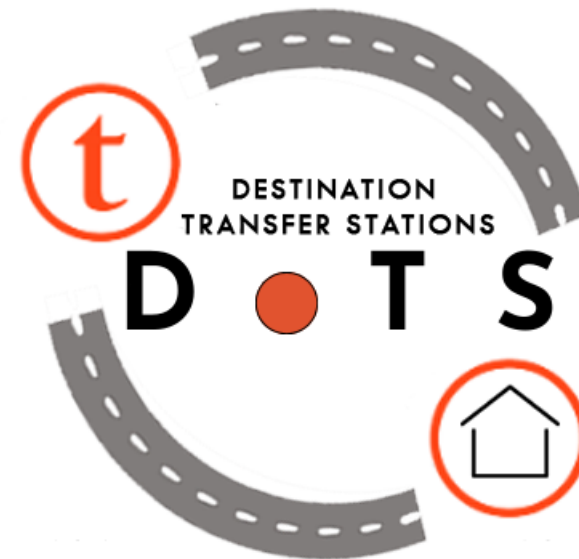


## ECRTCC Program - DoTS

### *Destination Transfer Stations*

ECRTCC is working to close transportation gaps where invisible barriers stifle movement across the region. East Central Minnesota's 3 public transportation systems do not connect with one another.

Destination Transfer Stations (DoTS) will be locations that offer transit riders travel and connection across transit systems throughout the region at a low cost. Efforts, studies, and data collection are in process to create well-identified and convenient locations where riders can comfortably wait for a scheduled transit provider to pick them up and transport them across the region or connect them to a subsequent transportation system.



Bridging transportation gaps with DoTS

# Community Development Programs

## Child Care

ECRDC is working with a team in each of our 5 counties to uncover solutions that will work best for their communities.

Key Components:

- A website has been developed for each county to use for outreach as well as a coalition member portal to access documents:  
**EastCentralChildCare.com**
- A Child Care Business Assistance Directory has been developed and is available for help with resources and funding
- A Child Care Business Loan Program is available for assistance with start-up or expansion needs



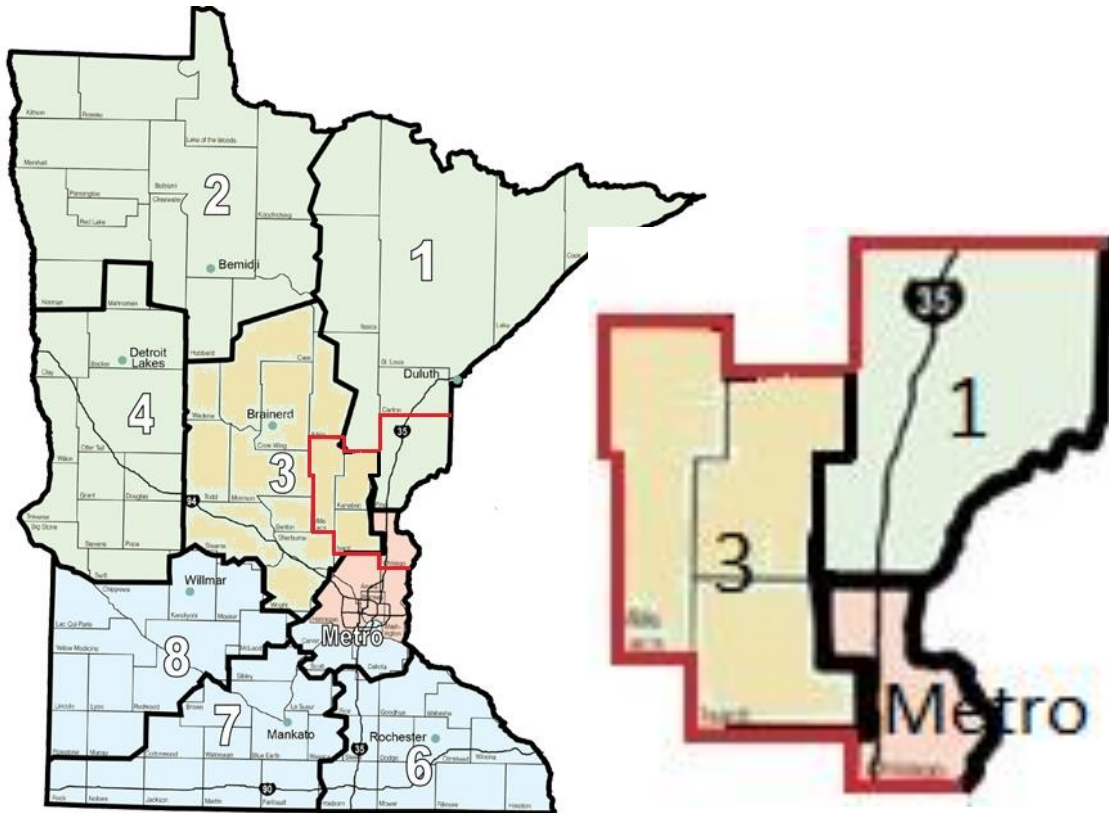




**EAST CENTRAL**  
Regional Development Commission

Progress through leadership and advocacy

# Transportation Planning



- The Minnesota Department of Transportation (MnDOT) contracts with the ECRDC to provide a wide range of transportation-related planning services across the five county 7E region.
- Area Transportation Partnerships (ATPs) exist in each of MnDOT's districts. The ATPs guide the distribution of MnDOT funds to local projects.
- Chisago County = Metro District ATP  
Pine County = District 1 ATP  
Isanti, Kanabec, Mille Lacs County = District 3 ATP



Progress through leadership and advocacy

# Transportation Planning

## *Toward Zero Death Coalitions – Kanabec & Mille Lacs Counties*

ECRDC leads two TZD Coalitions addressing the problem of speeding and impaired driving, both of which have caused serious and fatal crashes on roads and highways in Kanabec and Mille Lacs Counties. Through education and outreach, our goal is to reduce the number of serious and fatal crashes for residents and law enforcement.

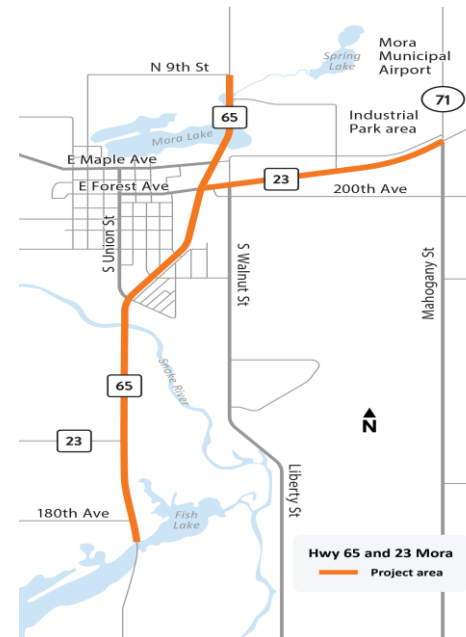
Please share social media posts on ECRDC, Mille Lacs, and Kanabec's Facebook pages.



# Transportation Planning

## *Transportation Advisory Committee*

ECRDC’s Transportation Advisory Committee (TAC) provides an advisory role and recommendations for a variety of MnDOT funding regarding local projects. This guidance moves through the ECRDC board, and the District ATPs.



Mora Hwy 65 and Hwy 23 — Corridor Study.

For more information go to <https://talk.dot.state.mn.us/hwy-65-23-mora-corridor-study>.



# Transportation Planning

## *Examples of Funding Sources:*

- Federal Surface Transportation Block Grant (STBG)
- State Safe Routes to School both Planning and Infrastructure (SRTS)
- Federal Transportation Alternatives Program (TA or TAP)
- Federal Transportation Economic Development (TED)
- Scenic Byway
- Toward Zero Deaths (TZD)







**EAST CENTRAL**  
Regional Development Commission

Progress through leadership and advocacy

## Questions?

